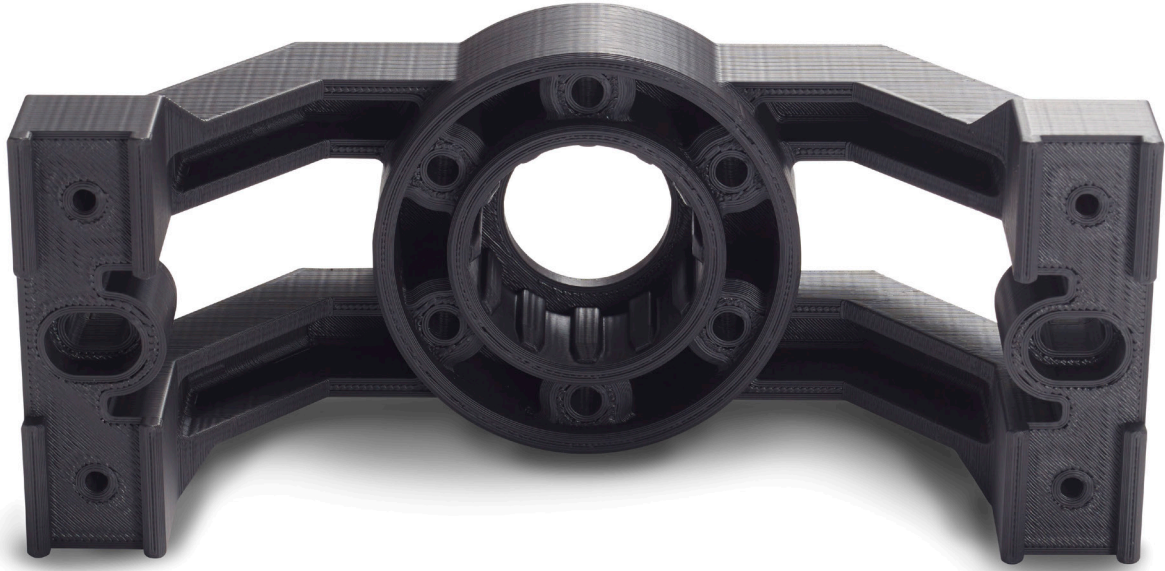


Diran 410MF07



FDM Thermoplastic Filament
Perfect for manufacturing
tooling applications.

The information presented are typical values intended for reference and comparison purposes only.
They should not be used for design specifications or quality control purposes.



Overview

Diran™ 410MF07 is a nylon-based thermoplastic FDM® material, mineral-filled 7% by weight. It demonstrates very good toughness and impact strength combined with resistance to hydrocarbon-based chemicals. Its smooth, lubricious surface quality offers low sliding resistance.

Typical applications include jigs, fixtures and other forms of general manufacturing tooling, and is particularly effective for applications needing a non-marring interface between the tool and the workpiece.

Contents:

Overview	2
Ordering Information	3
Physical Properties	4
Mechanical Properties	5
Appendix	7

Ordering Information

3D Printer Compatibility: F370™ and F370®CR

Support Material: SUP4000B™

Build Tray: F370/F370CR, High Temperature

Table 1. Diran 410MF07 Thermoplastic Filament Ordering Information

Part Number	Description
Filament Canisters	
333-90410	Diran 410MF07, 90 cu in, F123
333-60400	SUP4000B™, 60 cu in, F123
Printer Consumables	
123-00402-S	F123 Standard Head (All Layer Heights)
123-00314-S	F370/F370CR Build Tray, High Temperature

Physical Properties

Values are measured as printed. XY and XZ/ZX orientations were tested.

For full details refer to the [Stratasys Materials Test Procedure on www.stratasys.com](http://www.stratasys.com).

DSC and TMA curves can be found in the Appendix.

Table 2. Diran 410MF07 Thermoplastic Filament Physical Properties

Property	Test Method	Typical Values XY	Typical Values XZ/ZX
HDT @ 66psi	ASTM D648 Method B	90 °C (194 °F)	90 °C (194 °F)
HDT @ 264psi	ASTM D648 Method B	70 °C (158 °F)	70 °C (158 °F)
Tg	ASTM D7426 Inflection Point	117.34 °C (243.21 °F)	117.34 °C (243.21 °F)
Mean CTE	ASTM E831 (40 °C to 140 °C)	56.60 $\mu\text{m}/[\text{m}\cdot^{\circ}\text{C}]$ (31.44 $\mu\text{in}/[\text{in}\cdot^{\circ}\text{F}]$)	112.6 $\mu\text{m}/[\text{m}\cdot^{\circ}\text{C}]$ (62.56 $\mu\text{in}/[\text{in}\cdot^{\circ}\text{F}]$)
Volume Resistivity	ASTM D257	$1.50\cdot 10^{15} \Omega\cdot\text{cm}$	$1.50\cdot 10^{15} \Omega\cdot\text{cm}$
Dielectric Constant	ASTM D150 1 kHz test condition	3.58	3.73
Dielectric Constant	ASTM D150 2 MHz test condition	2.85	2.95
Dissipation Factor	ASTM D150 1 kHz test condition	0.013	0.014
Dissipation Factor	ASTM D150 2 MHz test condition	0.000	0.012
Specific Gravity	ASTM D792 @ 23 °C	1.16	1.16

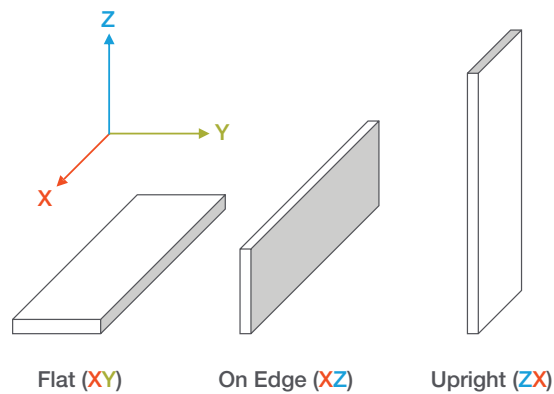
Mechanical Properties

Samples were printed with 0.010 in. (0.254 mm) layer height.

For the full test procedure please see the Stratasys Materials Test Procedure on www.stratasys.com.

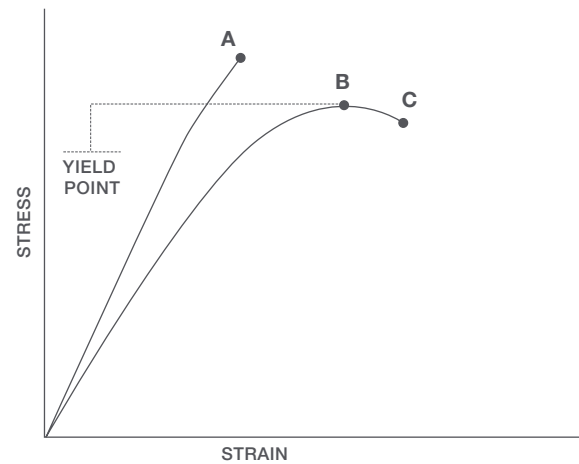
Print Orientation

Parts created using FDM are anisotropic as a result of the printing process. Below is a reference of the different orientations used to characterize the material.



Tensile Curves

Due to the anisotropic nature of FDM, tensile curves look different depending on orientation. Below is a guide of the two types of curves seen when printing tensile samples and what reported values mean.



A = Tensile at break, elongation at break (no yield point)

B = Tensile at yield, elongation at yield

C = Tensile at break, elongation at break

Table 3. Diran 410MF07 Thermoplastic Filament Mechanical Properties

		XZ Orientation ⁽¹⁾	ZX Orientation ⁽¹⁾
Tensile Properties: ASTM D638			
Yield Strength	MPa	44.8 (1.5)	No Yield
	psi	6490 (220)	No Yield
Elongation @ Yield	%	4.3 (0.041)	No yield
Strength @ Break	MPa	40.4 (3.0)	30.7 (2.0)
	psi	5860 (440)	4460 (290)
Elongation @ Break	%	12 (3.2)	3.1 (1.0)
Modulus (Elastic)	GPa	1.69 (0.017)	1.46 (0.021)
	ksi	246 (2.4)	212 (3.0)
Flexural Properties: ASTM D790, Procedure A			
Strength @ Break	MPa	No break	46.7 (2.3)
	psi	No break	6770 (330)
Strength @ 5% Strain	MPa	59.9 (1.6)	-
	psi	8690 (230)	-
Strain @ Break	%	No break	3.1 (0.53)
Modulus	GPa	1.85 (0.043)	1.47 (0.065)
	ksi	268 (6.2)	213 (9.4)
Compression Properties: ASTM D695			
Yield Strength	MPa	75.8 (4.3)	163 (30)
	psi	11000 (630)	23600 (4300)
Modulus	GPa	1.54 (0.026)	1.46 (0.022)
	ksi	223 (3.8)	212 (3.2)
Impact Properties: ASTM D256, ASTM D4812			
Izod, Notched	J/m	442 (76)	26.8 (5.3)
	ft*lb/in	8.28 (1.4)	0.502 (0.10)
Izod, Unnotched	J/m	1420 (200)	142 (25)
	ft*lb/in	26.5 (3.8)	2.66 (0.46)

(1) Values in parentheses are standard deviations

Appendix

Figure 1. 2nd heating scan, DSC, for Diran 410MF07

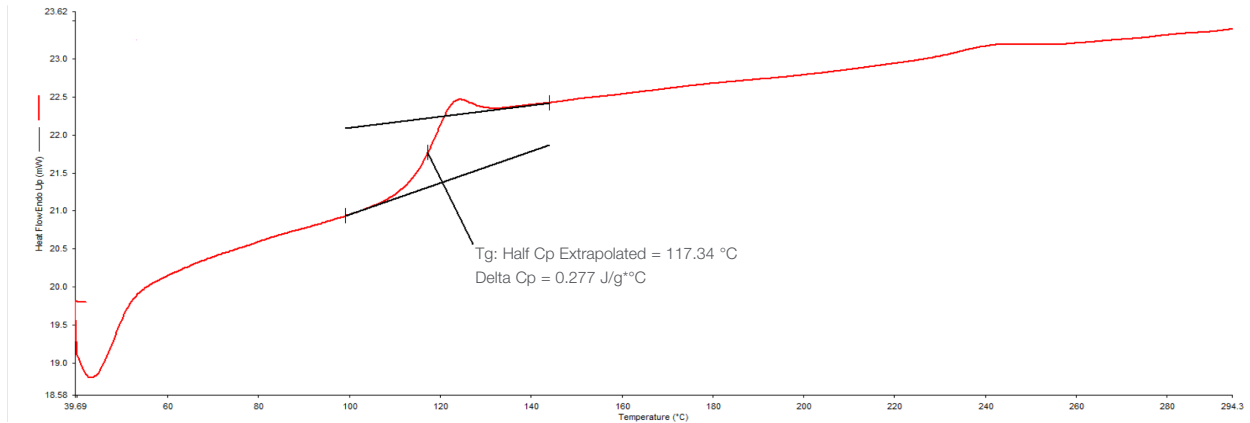


Figure 2. TMA CTE curve inplane with the layer

Sample: Flat-1
Size: 6.3338 mm
Method: Ramp
Comment: RT-160C @ 3C/min

TMA

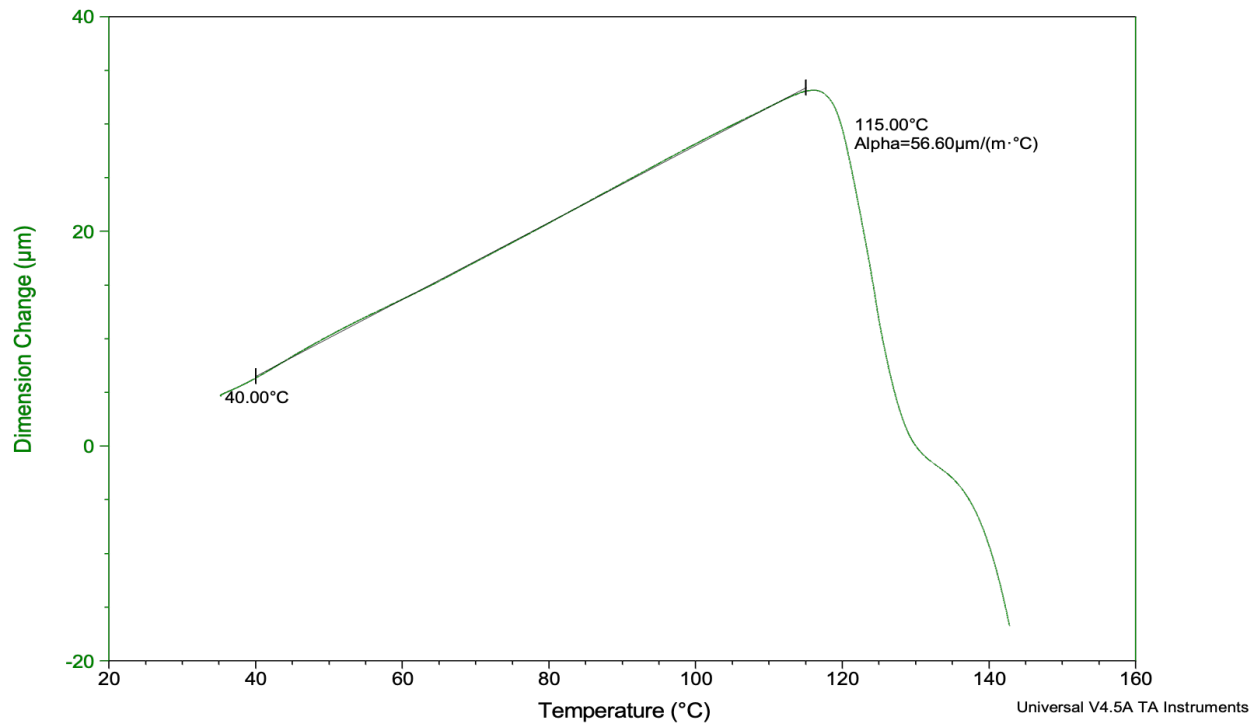
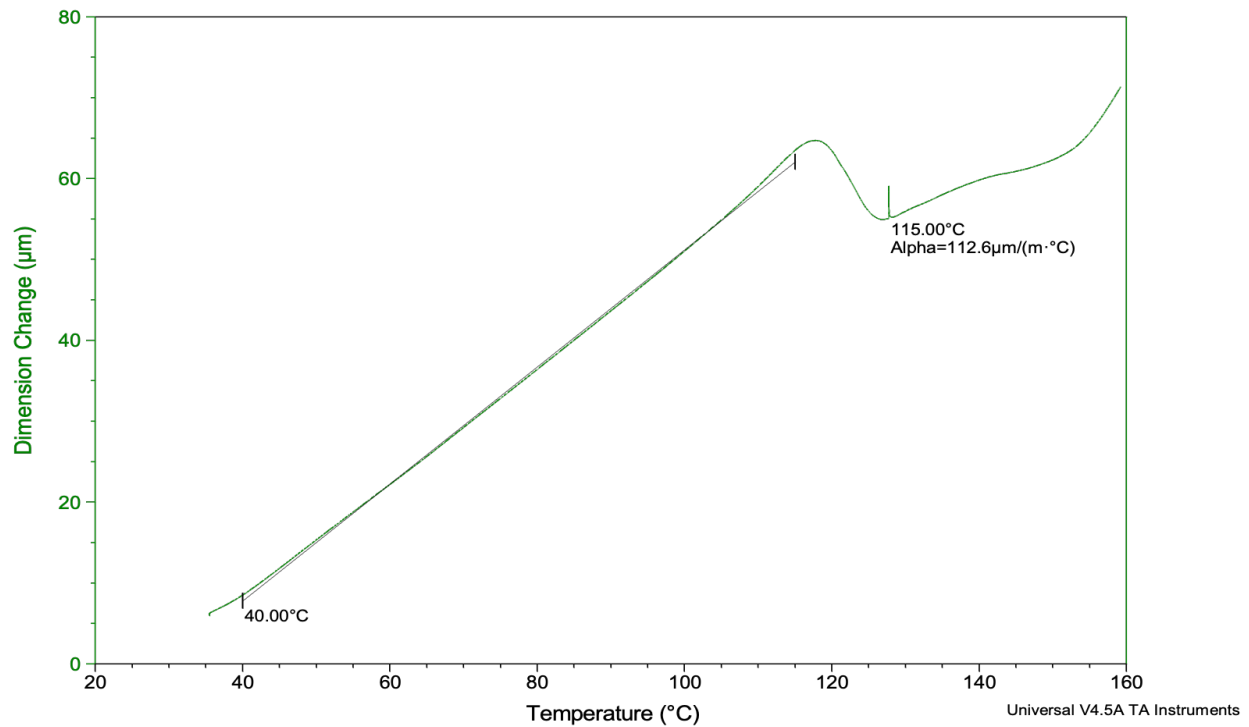


Figure 3. TMA CTE curve normal to the layer

Sample: Side-1
 Size: 6.4269 mm
 Method: Ramp
 Comment: RT-160C @ 3C/min

TMA



alphacam GmbH
 Erlenwiesen 16
 D-73614 Schorndorf
 Tel.: +49 7181 9222-0
 info@alphacam.de

alphacam austria GmbH
 Handelskai 92, Gate1 / 2. OG / Top A
 A-1200 Wien
 Tel.: +43 1 3619 600-0
 info@alphacam.at

alphacam swiss GmbH
 Zürcherstrasse 14
 CH-8400 Winterthur
 Tel.: +41 52 26207-50
 info@alphacam.ch



alphacam.de

.at

.ch

stratasys.com

ISO 9001:2015 Certified

© 2022 Stratasys. All rights reserved. Stratasys, the Stratasys Signet logo, FDM, and Fortus are registered trademarks of Stratasys Inc, F370, F370CR and Diran 410MF07 are trademarks of Stratasys, Inc. All other trademarks are the property of their respective owners, and Stratasys assumes no responsibility with regard to the selection, performance, or use of these non-Stratasys products. Product specifications subject to change without notice. MDS_FDM_Diran410MF07_0222a

